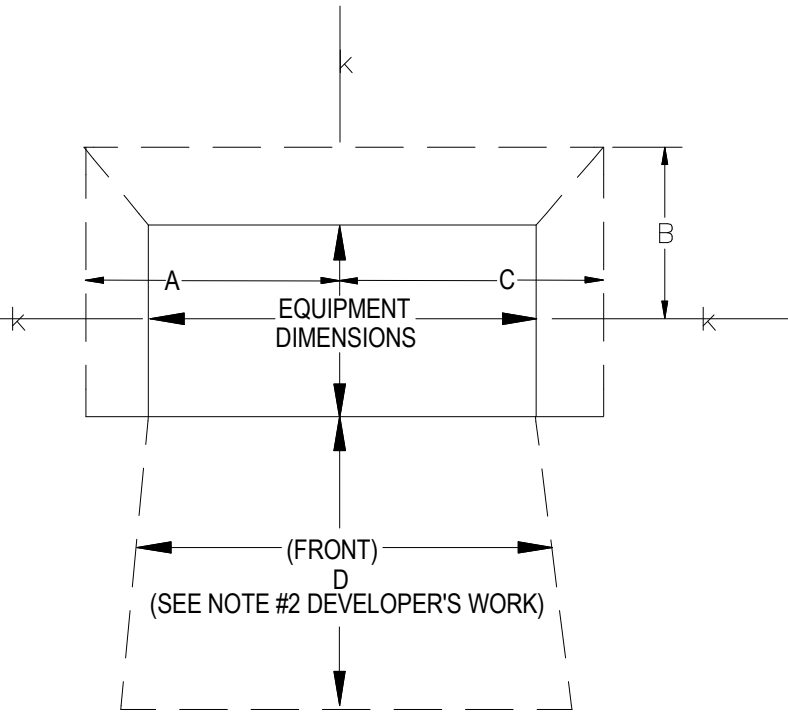


NOTE TO CUSTOMER

IN ACCORDANCE WITH PA ACT 287 OF 1974 AS AMENDED, COMMONWEALTH OF PENNSYLVANIA, THE CUSTOMER'S CONSULTING ENGINEERS/ARCHITECTS SHALL FURNISH TO THE INSTALLER THE LOCATION OF ANY UNDERGROUND UTILITIES IN THE VICINITY OF THE PROPOSED ELECTRICAL FACILITIES.



NOTE:

DUQUESNE LIGHT CO. TO HAVE RIGHT OF INGRESS AND EGRESS AT ALL TIMES. DUQUESNE LIGHT CO. TO BE ABSOLVED FROM ALL LIABILITY FOR PROPERTY DAMAGE DUE TO NON-NEGLIGENT INGRESS AND EGRESS OF DUQUESNE LIGHT CO. PERSONNEL OR EQUIPMENT.

PRIOR TO REQUESTING INSTALLATION OF D.L.CO. EQUIPMENT, AN UNOBSTRUCTED ACCESS WAY CAPABLE OF WITHSTANDING 72,000# TRUCK LOADING MUST BE PROVIDED AND MAINTAINED BY THE CUSTOMER.

DIAGRAM

NOTE TO TELEPHONE CO.

*BASED ON PRESENT DISTRIBUTION CIRCUIT ARRANGEMENTS, THE PROTECTION SCHEME DOES MEET SPECIFICATIONS SET FORTH IN EEI PUBLICATION 68-62".

EQUIPMENT	EQUIPMENT DIMENSIONS	EQUIPMENT CLEARANCE FROM DLCO EQUIPMENT CENTERLINE (FT)			FRONT
		A	B	C	D <small>** (SEE DEVELOPERS WORK NOTE #2)</small>
* TRANSFORMER	6' X 6'	4'	4'	4'	9' X 6'
* FIBERGLASS LOADBREAK BUSHING JUNCTION	10'L X 7'-6"W	6'	6'	6'	9' X 6'
FIBERGLASS VAULT	3' X 3'	2'-6"	2'-6"	2'-6"	9' X 6'
SECONDARY ENCLOSURE	2'L X 1'W	2'	1'-6"	2'	3' X 6'

UTILITY EQUIPMENT WORKSPACE CLEARANCE TABLE

(SEE DIAGRAM ABOVE)

*DIMENSIONS INCLUDE GROUND GRID AROUND EQUIPMENT